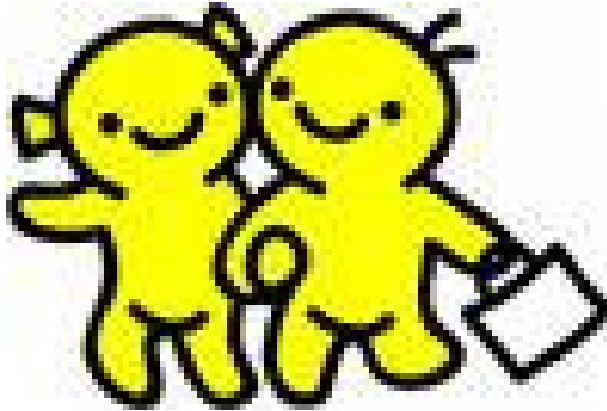


Les voyelles

A a

A a



un **a**mi

un a mi

E e

è e



le cheval
en
peluche

l i

ÿ i



Mélanie
Mélanie

O o
O o



le robot

le robot

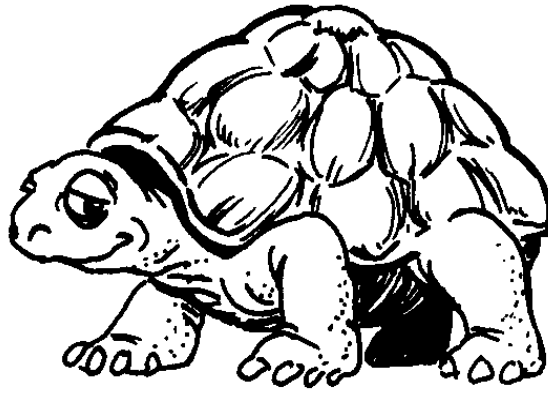
au
eau



le taureau

le taureau

U u
U u



la tortue
la tortue

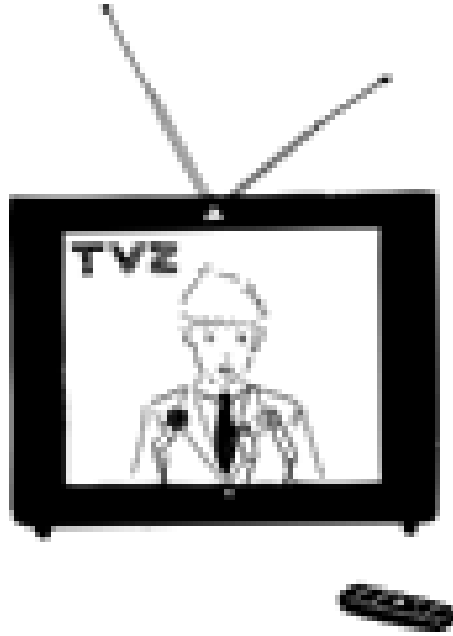
ou
ou



le loup
le loup

é

é

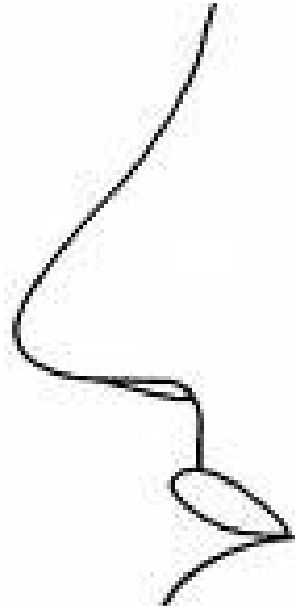


la télé

la télé

ez

ez



le nez

le nez

er

er

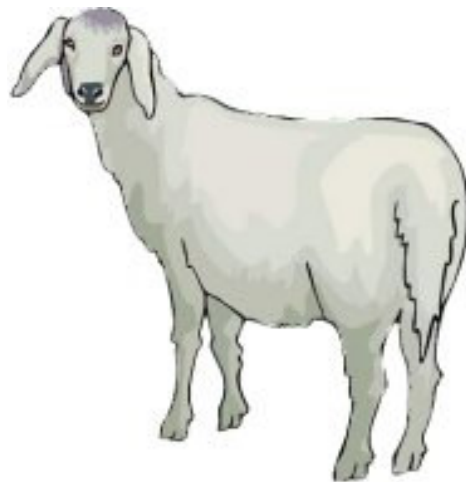


le boucherer

le boucherer

on

om

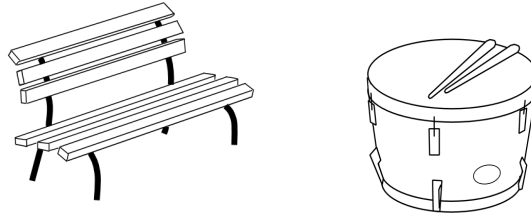


un moutonon

un moutonon

an

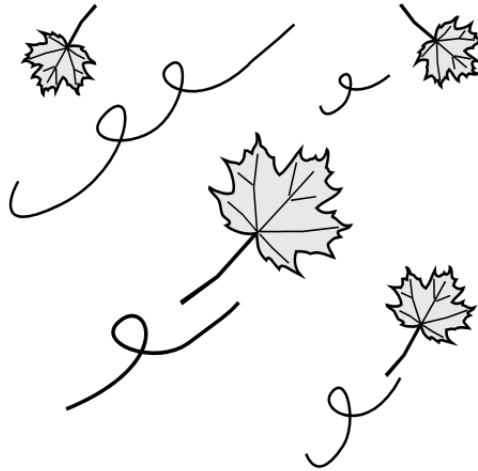
am



un banc
un tambour

en

em



le vent
le rempart

oi

oi



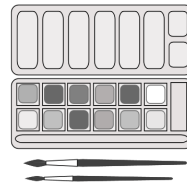
le roi

le roi

in

ain

ein



un dessin

une main

de la peinture

Les consonnes

P p
P p



la pompe
la pompe

R r

R r



Arthur le
gros dur

Arthur le gros dur.

L l

L l



le col

le col

T t

T t



la tarte

la tarte

M m

M m



le fantôme

le fantôme

B b

B b

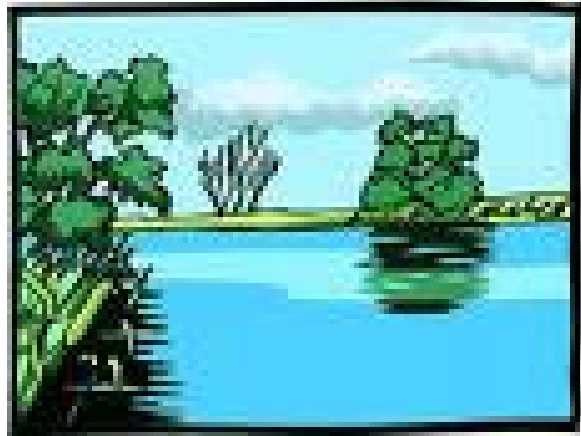


la robe

la robe

C c

C c

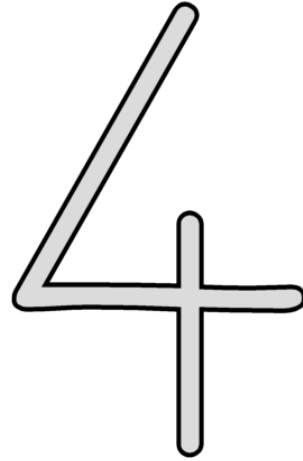


le lac

le lac

qu

qu



quatre

quatre

K k

K k



Le karatéka

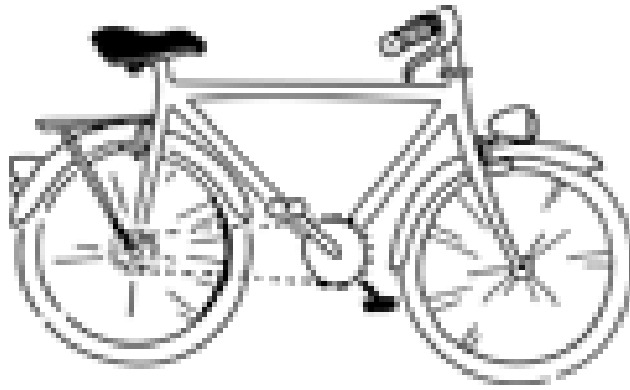
le karatéka

V

v

V

v



le vélo

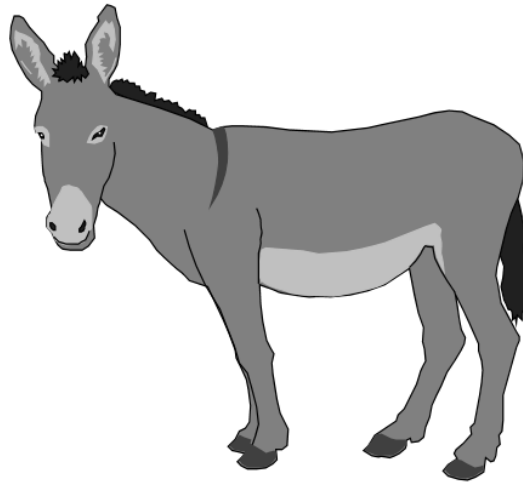
le vélo

N

n

N

n



un âne

un âne

S s

ſ ʒ

6

six

six

C Ç

ç ç

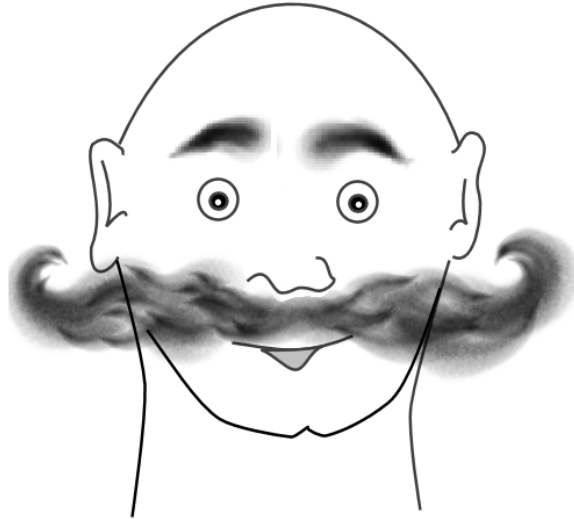


la place

la tronçonneuse

ch

ch

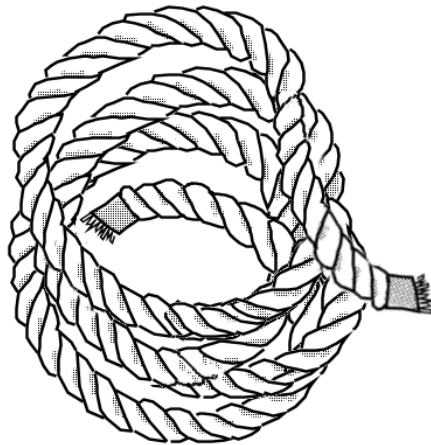


les moustaches

les moustaches

Dd

Dd

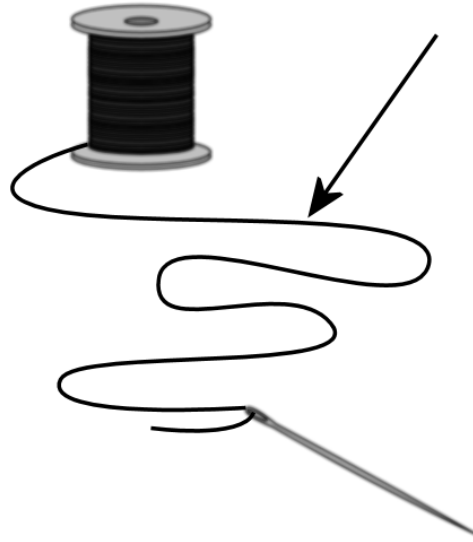


la corde

la corde

Ff

Ff



le fil

le fil

ph

ph



le
téléphone











